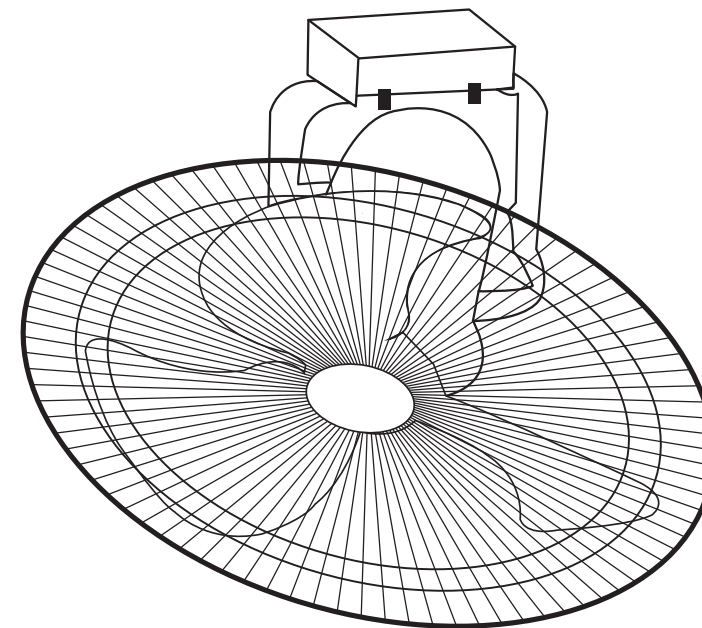


MILUX[®]

20" COMMERCIAL AUTO FAN
MODEL: MIAF-4020



INSTRUCTION MANUAL

*Please read this manual carefully before operating this product.
Keep this manual handy for further reference.*

Distributed by:
MILUX SALES & SERVICE SDN. BHD. (302263-X)
No. 31, Lorong Jala 14/KS10, Off Jalan Telok Gong,
42000 Port Klang, Selangor, Malaysia.

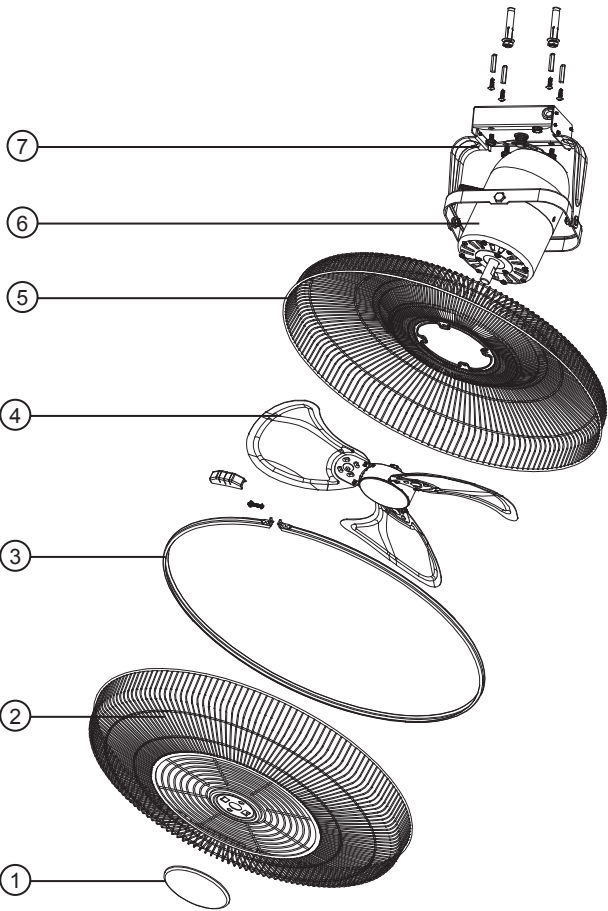
Tel: 03-3134 1254 Fax: 03-3134 1193 Toll Free: 1800-88-MILUX (64589)
E-mail: customercare@milux.com.my
Website: www.milux.com.my

14.85 cm

21 cm

Parts Identification

- 1. Front Guard Ornament
- 2. Front Guard
- 3. Guard Ring
- 4. Fan Blade
- 5. Rear Guard
- 6. Motor Body
- 7. Bracket



Specifications

Model		MIAF-4020
Voltage		220~240V-50Hz
Power		150W
Fan Blade Size		20"
Speed (RPM)	Maximum Speed	1400
	Minimum Speed	1010
Air Delivery		8500m³/h
Effective Coverage Area		20m³ to 30m³

**Note: Specifications are subject to change without prior notice.*

14.85 cm

Cautions

- This appliances is not intended for use by persons (including children) with reduce physical, sensory or mental capabilities, or lack of experience and knowledge, unless they have been given supervision or instruction concerning use of the appliance by a person responsible for their safety.
- Do not use this appliance in high temperature and high humidity area.
- If the supply cord is damaged, it must be replaced by the manufacturer, its service agent or similarly qualified persons in order to avoid a hazard .
- Must use separate, well-earthed and 3 core cable & plug top.
- Keep children away from package and its parts. Danger of suffocation from cartons and plastic film.
- Always ensure that electrical mains is turned off and unplug before cleaning the appliance.
- When pulling out the plug, do not pull cord to avoid cord damage.
- Do not insert finger or other objects into the fan guard.
- Do not use the appliance outdoor or near windows. Rain drop may cause electrical hazards.
- Do not operate this appliance without a fan blade, broken or bent fan blade.

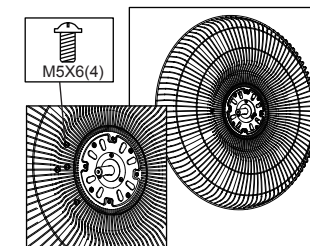
Maintenance and Cleaning

- Handle fan blade with care during cleaning.
- Do not bend the blades when installing and maintaining.
- Use mild soap with damp cloth or sponge to clean the fan. Wipe until dry .
- The ventilation holes of rear motor cover must be free of dust and dirt. Please clean is frequently.

Assembly Step

(a) Rear Guard

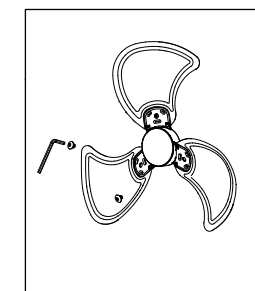
- Remove 4 screws at front of Motor Assembly.
- Put the Rear Guard on the Motor assemble.
- Screw and tighten the 4 screw.



(b) Fan Blade Assembly

- Remove Protective Film on the Fan Blade.
- Tighten up all screw at the lateral of canter piece.
- Take The Fan Blade and press on the Canter Piece.
- Use the Hex driver to fix screw at fan blade and centre piece.

Note: Take note on the fan blade direction.



21 cm

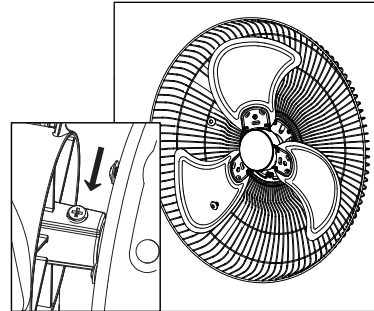
Assembly Step

(c) Fan Blade Installation

- Locate flat surface at motor shaft.
- Insert Fan Blade to motor shaft with screw face to flat surface.
- Tighten the fan blade screw.

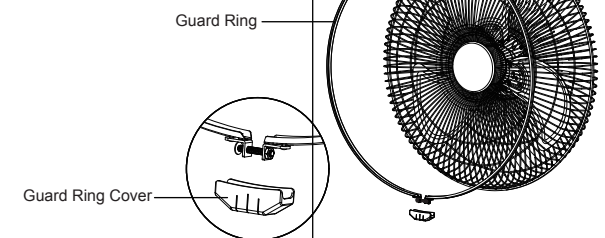
Note: Please take note on the fan blade direction.

Neck Joint
Tongue
Groove



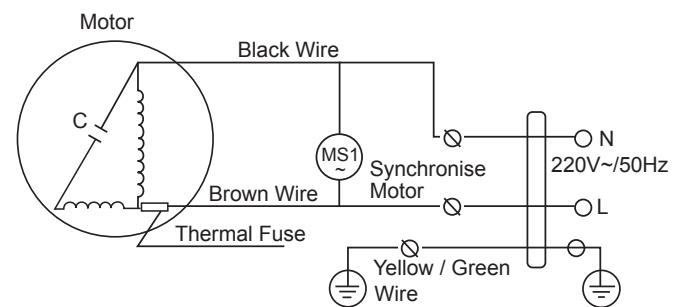
(d) Front Guard Assembly

- Insert screw into Guard Ring hole & turn clockwise by 2 cycle
- Assembly the Guard Ring and Front Guard
- Fit and match The Front Guard & Rear Guard together .
- Tighten up The Guard Ring screw .



Installation

(a) Wiring Diagram

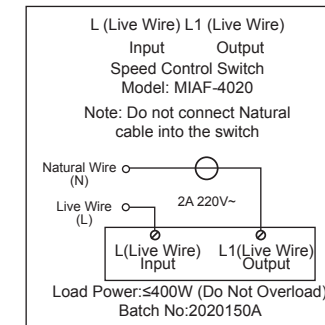


3

14.85 cm

Installation

(b) Regulator Wiring



Note: Regulator is using Variable Resistor system
(Speed 6 is the highest speed and speed 1 is the lowest speed)

(c) Assembly the unit

- Remove 4 screws as shown in figure A.

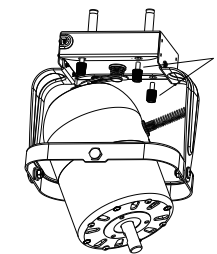
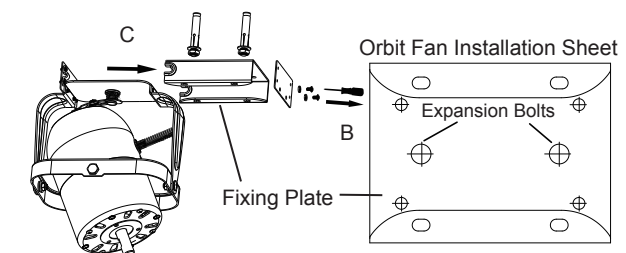


Figure A

- Remove 2 screws at side of the bracket (Figure B).
 - Remove main bracket from fan (Figure C).
 - Install bracket on the ceiling by using 2 wall plug.
 - Put back main body into bracket and screw back side screw.



Warning:

This product is not provided with cord and plug. When connect the appliances with power supply, it must installed by qualified personnel in order to avoid hazard.

4

21 cm